

**BRUNSWICK COUNTY EMERGENCY SERVICES Version Date: 03/25/08**

**Standard Operating Procedure # OPS-3**

**Approved by: Brunswick County Emergency Services Advisory Board –  
April 22, 2008**

**Subject: Mass Casualty Incident (MCI) Protocol**

**PURPOSE & SCOPE:**

To establish a standard countywide procedure for managing a Mass Casualty Incident.

This procedure shall provide a framework for critical decision-making of these incidents pertaining to recognition, defining MCI levels, notification to communications center, scene management, incident command position field operation guides, triage, treatment areas, patient transportation, hospital notification, establishing, and operation of staging and responder rehabilitation areas.

Background; This Emergency Service action plan describes the process Brunswick County will utilize in response to an event with multiple victims. This local MCI plan will be the most frequently utilized multiple causality incident protocol since it provides guidance for managing events with five to twenty victims. Historically speaking Brunswick County has rarely if ever experienced a larger event.

This plan does not replace the VA/Central Virginia MCI plan which addresses how regional/state mutual aid resources and hospital surge capacity will be managed in a large event that would overwhelm the county and its normal mutual aid resources (Mecklenburg, Greensville & Dinwiddie) and hospitals.

Mass Causality Incident (MCI) levels will be by determined by the number of victims present at the scene Prior to Triage. The number of casualties may exceed the capabilities of Brunswick County and normal mutual aid resources (Mecklenburg, Greensville & Dinwiddie) EMS providers.

The MCI plan integrates all responding agencies under incident command to define personal roles, describe lines of authority and effective communication. It is designed to manage an unusual event that will tax existing resources.

This document was developed with the intent of meeting the standards of the National Incident Management System. The plan allows the local agencies to mesh with state and federal resources if the incident requires such. (NIMS Compliant

**RESPONSIBILITY:**

It shall be the responsibility of all Brunswick County emergency responders to comply with the use of this standard operating procedure. All officers of each agency operating under this S.O.P. shall be responsible for enforcing compliance of these procedures.

**PROCEDURES:**

**A. MCI LEVELS**

The following describes the MCI Levels and general response requirements:

**MCI Level - 1 (5- 10 Victims):**

- 2-4 ALS Transport Units
- 2 Engine Companies

**Notification** by the Incident Commander(IC) or Emergency Communication Center (ECC) of:

- 2 nearest hospitals
- Nearest Trauma Center
- Local Mutual Aid Agencies (May need EMS assistance)

**MCI Level - 2 (11- 20 Victims):**

- 6 ALS Transport Units
- 3 Engine Companies
- 1 MCI Cache \*\* (When completed)
- 1 Bus (Air Conditioning preferred)

**Notification** by the IC or (ECC) of:

- 3 nearest hospitals
- Trauma Center
- Local Emergency Services Coordinator
- Local Mutual Aid Agencies

### **MCI Level - 3 (21 -100 Victims)**

- Brunswick Emergency Services;
  - 7 ALS Transport Units
  - 4 Engine Companies
  - 1 MCI Cache \*\* (When completed)
  - 1 Bus (Air Conditioning preferred)

#### **Notification by the IC or ECC.**

- 5 nearest hospitals
- 2 Trauma Centers
- Local Emergency Services Coordinator
- Local Mutual Aid Agencies
- VA Medical Control

### **BRUNSWICK COUNTY EOC BECOMES OPERATIONAL BECOMES STATE/REGIONAL MUTUAL AID EVENT**

### **MCI Level - 4 (101-1000 Victims)**

- Brunswick Emergency Services (same as a Level -3)
- STATE EMS Mutual Aid
- Federal Mutual Aid

## B. ON SCENE ACTIONS FOR MCI EVENTS

1. **First** arriving resource (**Fire, LE, or EMS**) to all MCI events.  
**Sizes up** the situation and notifies the ECC of the MCI Level (number of victims prior to triage)
2. First arriving (**Fire or EMS**) is **IC**.
3. For an MCI all Medical Transport units will transport two non-ambulatory + one ambulatory victim  
= THREE victims/unit.
4. **Triage Tags** will be used as the Only medical record.
5. Classify (triage) patients according to the **START** protocol for adults, and **JumpSTART** protocols for pediatrics.
6. For MCI Level – 2+ a Treatment Area will be established using triage tarps (Red-Yellow-Green).
7. Establishes communications with the appropriate hospitals or VA Medical Control.
8. On scene & enroute communication with hospitals will be BRIEF to include the following data;
  - Number of patients
  - Ambulatory status
  - Brief Injury description
  - Adult/child/infant
  - Triage Class (Red-Yellow- Green)

9. For MCI Level-2+ Mutual aid units will respond to the staging area unless otherwise directed by the Incident Commander.

### **C. MCI INCIDENT COMMAND SYSTEM**

The MCI level will determine the number of ICS positions that will need to be filled.

- **Level – 1**: (3-5)

Incident Commander

Triage Area Supervisor

Transportation Supervisor

- LZ Supervisor (if needed)

\*Treatment Area Supervisor  
(if needed)

- **Level - 2**: (7- 10)

Incident Commander

Safety Officer

Triage Area Supervisor

Red Treatment Leader (EMS)

Yellow Treatment Leader (EMS)

Green Treatment Leader (EMS)

Patient Transportation Supervisor

\* LZ Supervisor (if needed)

Staging Area Supervisor

MCI Supply Supervisor

- **Level – 3** (13

Incident Commander

- Safety Officer (IC staff)
- PIO (IC staff)
- Liaison Officer (IC staff)

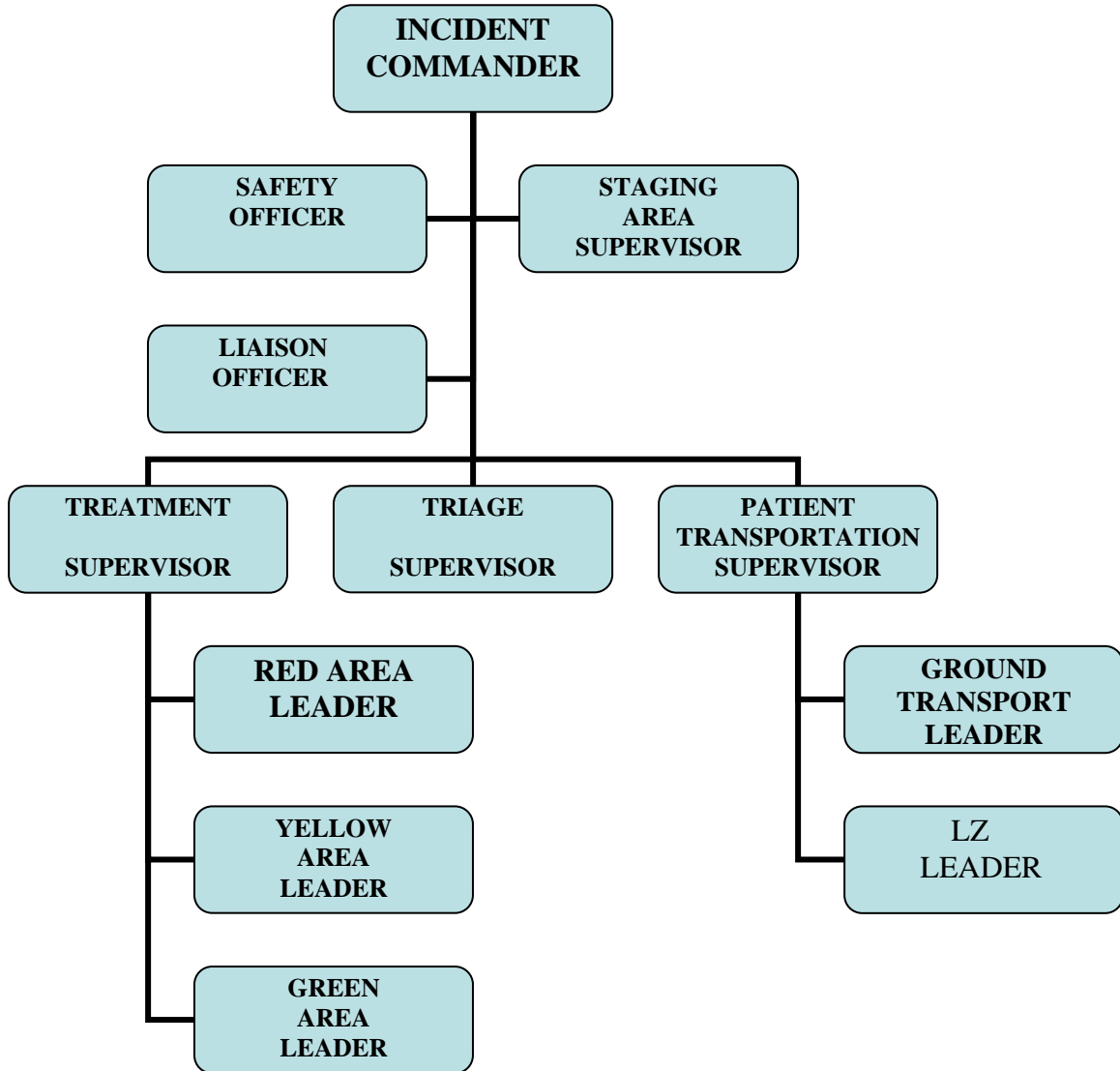
Medical Branch Director

- Triage Area Supervisor
- Treatment Area Supervisor
  - Red Treatment Leader (EMS)
  - Yellow Treatment Leader (EMS)
  - Green Treatment Leader (EMS)
- Patient Transportation Supervisor
- L Z Supervisor

Staging Area Supervisor

Rehab Supervisor

# MCI ICS Graph



See complete plan for ICS position FOGS,  
START/JumpSTART Triage protocols, ECC MCI Levels Run  
Cards, and Contact information.